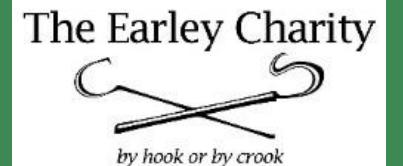


Funder Event

May 2024

+ READING VOLUNTARY ACTION



Welcome and Housekeeping



Who are we?



Working together with organisations across Reading
to improve the lives of local people

Our work aims to:

- **Encourage** volunteering and social action
- **Support** the voluntary sector to grow and thrive
- **Connect** communities in Reading
- **Improve** the lives of young people and families

What do we do?

Advice Service

Community Wellness Outreach

Equality, Diversity and Inclusion

Get Online Reading

Volunteering Service

Readyfriends

Social Prescribing

[Find out more here](#)



Overview

TIMING	SECTION
10:30 – 10:40	RVA - Welcome, housekeeping and introductions
10:40 – 10:55	Funder 1: Berkshire Community Foundation
10:55 – 11:10	Funder 2: The Earley Charity
11:10 – 11:25	Funder 3: Reading Borough Council
11:25 – 11:35	RVA – further support and resources
11:35 – 12:00	Speed Q&A and speed networking
12:00 – 12:30	Optional session with the Lloyds Foundation – niche funding

Introductions

Name

Charity

What you do – one sentence

The word "hello." is written in a colorful, cursive font. The letters are multi-colored, with the 'h' in teal, 'e' in yellow, 'l' in orange, 'l' in red, 'o' in purple, and the period in blue. The background is a light gray gradient.

Funder 1: **Berkshire Community Foundation (BCF)**

Ellie Philpott

Community Impact Manager

Email: Ellie.Philpott@berkshirecf.org



Berkshire Community Foundation



Who are Berkshire Community Foundation ?



£1 million
distributed
in grants



229

community projects
funded across
Berkshire

237,930
people helped

173

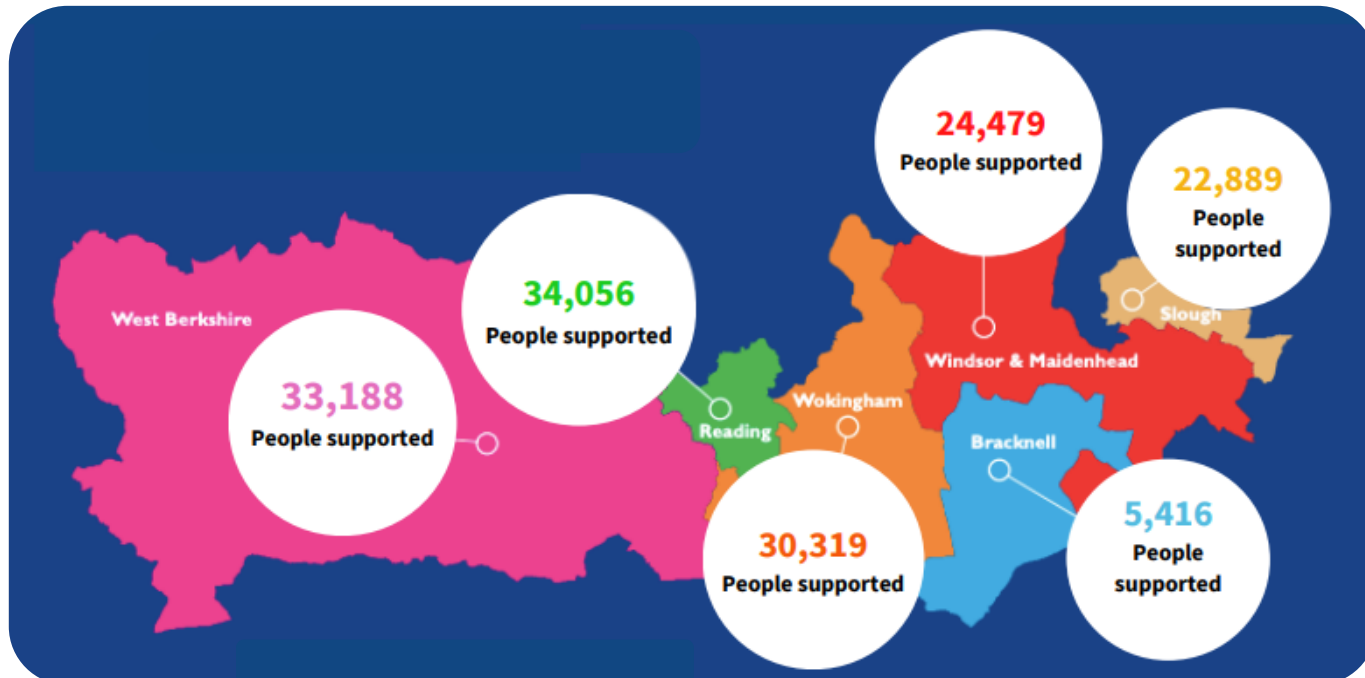
local charities and
volunteer groups
supported



Impact in Reading



Total Amount Awarded: **£237,162.25**
Total number of projects supported: **72**
Total number of beneficiaries: **34,056**



Top 5 Primary Issues:

- Domestic Violence
- Disability and Access issues
- Poverty and disadvantage
- Health, wellbeing and serious illness
- Social inclusion and fairness

Top 5 Primary Beneficiaries:

- Children and young people
- Victims of crime/violence/abuse
- People living in poverty
- Families/Parents/Lone parents
- Local residents

Vital for Berkshire



Our next Vital for Berkshire round will be open over the summer with grant awards being made in September 2024.

We invite applications from charities, community groups and projects that support vital needs in Berkshire, such as (but not limited to): physical and mental health, supporting young and vulnerable people or groups, combating isolation, tackling poverty and disadvantage, offering equal opportunities for all, and more. Applications are also invited to enable groups to fund their essential resources in order to secure services for their beneficiaries in the current cost of living crisis. When reviewing applications, the following is taken in to consideration:

Project matches the fund's criteria

- Amount of funding received in the previous 12 months
- Project timelines
- Outstanding monitoring reports.

Grants up to a maximum of £5,000 will be considered

The Grants Process

Grants round
opens

Applications &
supporting
documentation
received

Due diligence
& financial
assessments

Applications
reviewed by
Grants
Committee

Offer/rejection
letters sent &
grants paid

Monitoring

Resources



We have a number of resources available on our website:

Supporting Documentation: <https://www.berkshirecf.org/wp-content/uploads/2022/03/Due-diligence-requirements-factsheet.pdf>

We require the following documents to be submitted

- Constitution/governing document
- Latest annual accounts
- Latest bank statement
- Safeguarding Policy
- Equality & Diversity Policy

Funding hints and tips: <https://www.berkshirecf.org/wp-content/uploads/2022/03/Applying-for-funding-hints-and-tips.pdf>

Measuring project impact: <https://www.berkshirecf.org/wp-content/uploads/2019/10/Measuring-Impact-1.pdf>

Who can apply?



To be eligible to apply:

- Be a not-for-profit, voluntary or community group, social enterprise/CIC or registered charity
- Have a Governing Document (Constitution/Set of Rules)
- Have a Management Committee/Board of Trustees
- Have a bank account in the name of the group, with a minimum of two unrelated cheque signatories
- Be able to provide up-to-date accounts
- Have returned evaluation forms for any previously received grants
- Have safeguarding and equality policies which comply with current legislation
- Be helping the disadvantaged and provide a benefit to the community with clear and achievable outcomes
- Provide evidence there is a need for your work and must not be duplicating the work of other groups and organisations
- Have an itemised budget

Your group is not eligible to apply if:

- It's a regional or national charity – unless it has a local branch in Berkshire
- You have significant unrestricted funds
- You are applying for a capital project – this includes the purchase of vehicles or property
- Funds are for promoting religious or political issues
- Your activities are aimed at people outside Berkshire
- The money is required retrospectively
- You plan to use the grant for medical research
- You are applying for sponsorship
- You are looking for a grant for an individual over the age of 18 (or aged up to 25 with learning or physical disability)
- Funding is for the conservation of plants or animal welfare
- Funding is for overseas travel
- Funding is for one-off events



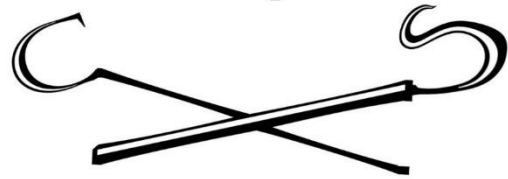
Questions?



Funder 2: **The Earley Charity**

Jane Wittig
Clerk to Trustees

The Earley Charity



by hook or by crook

The Earley Charity

GRANTS PROGRAMME

Grants Programme

Two main funding streams

- ▶ Grants to Individuals
- ▶ Grants to Organisations

The Earley Charity



by hook or by crook

Grants to Organisations

- ▶ Open to local charities, voluntary and community groups working to help and support people living in our area of benefit
 - ▶ Area of benefit: east, south and central Reading, Earley, Lower Earley, north Shinfield, Winnersh and Lower Caversham
 - ▶ Interactive map on the website
- ▶ Rolling programme
- ▶ Four rounds a year
 - ▶ Decisions generally taken around February, May, August and November
 - ▶ Dates and submission deadlines published on our website

The Earley Charity



by hook or by crook

Grants to Organisations

What can be applied for?

- ▶ Applications for project funding
 - ▶ one-off non-recurrent funding for specific projects or equipment
 - ▶ We do not accept applications for open ended salaries, core/running costs, general appeals or religious activities
- ▶ Grant awards normally range between £500 and £5,000
- ▶ Two categories: £3,000 and under and over £3,000
- ▶ Next submission deadlines:
 - ▶ £3,000 and under: **12th July 2024**
 - ▶ Over £3,000: **2nd August 2024**

The Earley Charity



by hook or by crook

Current Priorities

- ▶ Community transport
- ▶ Musical activities, especially community and child-focused work
- ▶ Performance and drama activities, for children and communities
- ▶ Access to computers, especially for children from deprived backgrounds
- ▶ Renewable energy projects
- ▶ Environmental improvements generally; also, woodlands and walks; planting initiatives; horticultural therapy, etc
- ▶ Support for young people not in education, employment or training (NEET)
- ▶ Support for early years work and pre-school education

Applications for projects in these areas are particularly welcome

The Earley Charity



by hook or by crook

Current Priorities

Two additional funds for 2023 - 2025

- ▶ Fund for charities which are encountering difficulties in post-pandemic circumstances and which wish to restructure, amalgamate or make other arrangements.
- ▶ Fund supporting educational activities which benefit schools and pupils in need. This fund is not open to the schools themselves but to creative providers of additional educational and child-centred activities.

The Earley Charity



by hook or by crook

How to apply

To request an application form

- ▶ Email ec@earleycharity.org.uk
- ▶ Complete the Pre-Application Questionnaire on our website www.earleycharity.org.uk

The Earley Charity



by hook or by crook

Capital Projects Fund 2024

- ▶ Announcing a new fund of £350,000 for capital projects, by which we mean 'bricks and mortar' such as new builds, extensions and large scale refurbishments
- ▶ Intend to support a number of projects
- ▶ Happy to accept bids for either full or part funding
- ▶ Inviting Expressions of Interest from local organisations with well-developed plans for a distinctive capital project
- ▶ Criteria:
 - ▶ Work in or predominantly serve the Earley Charity area of benefit
 - ▶ Have confirmed planning permissions in place
 - ▶ Project is due to start and/or complete between now and the end of 2025

The Earley Charity



by hook or by crook

Capital Projects Fund 2024

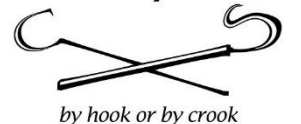
Application process

- ▶ Stage 1: submit an Expression of Interest – 2-sides of A4 + single page visual representation
 - ▶ Brief outline of project and the benefits it will deliver
 - ▶ Start and end dates
 - ▶ Current status
 - ▶ Overall budget and details of funding/financing already secured
 - ▶ Amount still required
 - ▶ List of major project partners and actual/potential co-funders, if appropriate

Closing date: 12:00 noon Monday 24th June 2024

Email to ec@earleycharity.org.uk marked **CAPITAL PROJECTS FUND 2024**

The Earley Charity



Capital Projects Fund 2024

Application process

- ▶ Stage 2: trustees select projects to be invited to give a short presentation
 - ▶ w/c Monday 22nd July 2024
 - ▶ Additional documentation, including formal legal documentation, will be required on the day of the presentation
- ▶ Stage 3: shortlisted projects will be asked to complete an application form
- ▶ Final decisions are expected to be taken 21st August 2024

The Earley Charity



by hook or by crook

The Earley Charity

Questions

The Earley Charity



by hook or by crook

Funder 3:
**Reading Borough Council
Small Grants fund (SGF)**

Mark Redfern
RBC Partnerships Manager

RVA Meet the Funder Event – May 2024



RBC Funding to VCS in Reading

- 2023/24 Total Funding: **£8,286,542**
- Facilities Leased from RBC
- Funding Sources: 23 separate funding sources

Funding Range	VCS Orgs
£1,000,000 +	1
£100,000 to £1,000,000	13
£50,000 to £100,000	7
£20,000 to £50,000	12
£10,000 to £20,000	23
£1,000 to £10,000	40
Less than £1,000	13

Examples of Funding Sources

- Closing the Gap Commissions
- Reading Integration Board / Better Care Fund
- Creative Lives Project
- Small Grants Fund R1 & R2
- High Street Heritage Action Zone
- Holiday Activities & Food
- Immigration & Asylum Support
- Household Support Fund
- Community Wellness Outreach Project
- Public Health
- Brighter Future for Children

Information on RBC Website

[Voluntary and community sector - Reading Borough Council](#)

- Funding
- RBC VCS Compact
- VCS Information & Support
- Reading Services Guide
- RBC Policies
- Volunteering

Small Grants Fund - £200,000

Feedback during 2023/24

- Larger or established VCS organisations more successful at winning funding,
- Some organisations would like more information of the specific scoring for each bid,
- Some expectation that there would be more focus on funding small, grassroots VCS organisations,
- Some frustration from unsuccessful bidders,
- No specific criticisms of aligning the SGF to the Tackling Inequality Strategy
- The application process was clear and straightforward,
- Additional information on the feedback from Round One and the scoring framework was helpful in developing applications,
- A similar number of VCS organisations were funded,
- Some VCS organisations would prefer a focus on the SGF providing core funding rather than funding for projects,
- Request to introduce a word limit for applications

Funder 4: **Lloyds Bank Foundation**

Marie Hale
South Central Manager

LLOYDS BANK
FOUNDATION
England & Wales



Lloyds Bank Foundation

Support for charities



The Foundation

We're an independent charitable foundation funded by Lloyds Banking Group. We work in partnership with small and local charities, people and communities, changing lives and working towards a more just and compassionate society.

Through unrestricted funding, support to develop, and influencing policy and practice we help small and local charities thrive, communities grow stronger, and people overcome complex issues and barriers so they can transform their lives.

PHOEBE,
Ipswich



LLOYDS BANK
FOUNDATION
England & Wales





Our vision

is of a just and compassionate society where people facing complex issues and barriers have the opportunity to thrive.

Our mission

is to partner with small and local charities, people and communities working towards a more just and compassionate society.



Gateway Into The Community

The difference we hope to make

For people

We will develop and share the most effective service models for people facing complex issues, Black, Asian and minority ethnic, and D/deaf and disabled communities.

For charities

We will maximise the resilience of small and local charities through a combination of funding and development support.

For communities

We will support communities to collaborate and tackle their most entrenched and pressing issues.

For society

We will share our learning with other sectors and places and influence national policy for the benefit of small charities and the communities they serve.



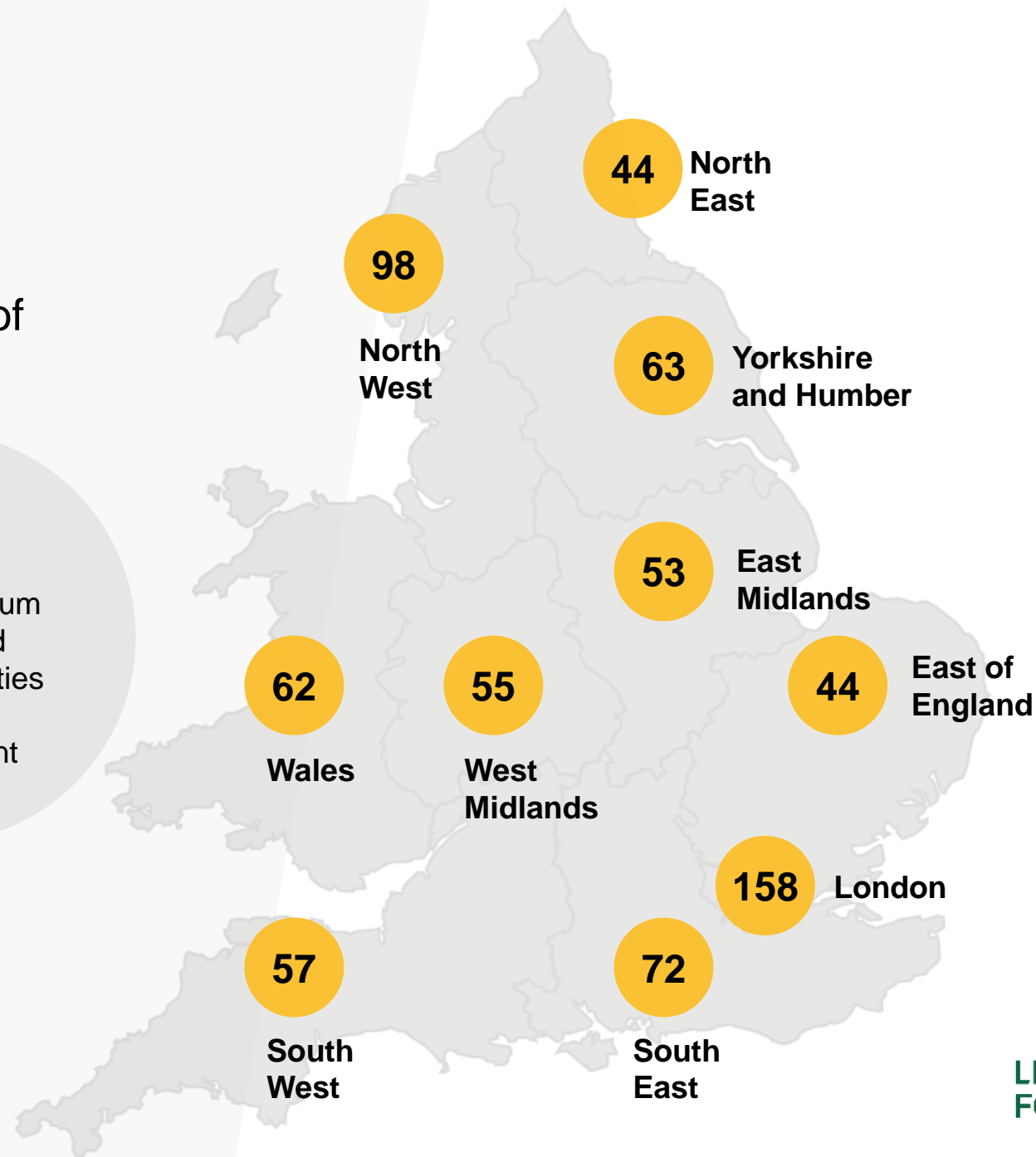
Our reach

In 2023 we supported a total of **706 charities** across England and Wales, awarding 173 new grants.

185
new grants to be awarded in 2024

60

Up to 60 asylum seeker and refugee charities to receive development support



Partnership

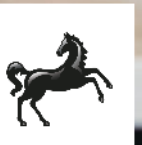
We work in partnership with charities and communities that understand the needs and aspirations of people and can make a lasting difference to their lives.

We provide flexible, unrestricted funding and additional support to develop to help charities grow stronger and thrive beyond the lifetime of their grant.



Victoria Ashley, CEO of Ripon Community Link, with Regional Manager for Yorkshire and the Humber, Carlos Chavez (right)

LLOYDS BANK
FOUNDATION
England & Wales



Funding support

We have three unrestricted programmes for charities with an income between £25k–£500k.

The three unrestricted funding programmes are

- For small specialist charities supporting people facing **complex issues**
- For small charities working with and led by people experiencing inequity because of their **race or ethnicity**; and
- For **d/Deaf and Disabled** people's organisations.



Mollin Devin, CEO of PHOEBE
in Ipswich, with Frances Warwick (right),
Regional Manager for East of England

**LLOYDS BANK
FOUNDATION**
England & Wales



Funding programmes

1

Specialist

For **small, local, specialist charities** that help people overcome **complex issues** that don't have simple solutions like homelessness, domestic abuse and addiction.

2

Racial equity

For small and local charities and **Community Interest Companies (CICs)**, led by and working with **people who have faced inequity because of their race** or ethnicity.

3

d/Deaf and Disabled people's organisations

This is for small and local charities which are led by and working with **d/Deaf and Disabled people** who are experiencing poverty.




Development support

We support charities to become stronger and more resilient through a range of development support that enables them to thrive over the long term.

The support covers a wide range of areas including:

- Strengthening governance
- Developing leadership
- Measuring impact
- Growing fundraising
- Marketing and communications



Sophie Ussher, CEO of Wycombe Women's Aid (right), with Marie Hale, regional manager for South Central speaking with a woman supported by the charity



**LLOYDS BANK
FOUNDATION**
England & Wales





We feel supported by the Foundation – it's so encouraging to have someone championing us to succeed.

The combination of funding alongside non-financial development support offered by the Foundation is amazing. Getting funding for core staff has meant that we have the time and resources to be able to engage with the additional non-financial support.

It's also been great to have access to amazing networks, such as Lloyds Banking Group colleagues. We've been able to get in touch with lots of different people and more doors are opening for us.

Minke Van Til, Co-Director of Ella's, a charity supporting survivors of modern slavery



536
eligible
applications
received

173
grants awarded

From our three 2023 programmes.

76% of applications (536) passed the
initial eligibility criteria.



Eligibility criteria



Are based and support people in **England and Wales**.



Registered charities** with **published accounts**.



Working with **people aged 18+**.



Have at least **three unrelated trustees**.



Income between **£25,000 – £ 500,000**.



Trustees, CEO and Senior Managers must **not live at the same address**.



Have a **Safeguarding Policy and Public Liability Insurance**.



Charity has its own bank account.



* Except for charities working with care leavers aged 16–25

** CICs can apply under our Racial equity programme

Your work



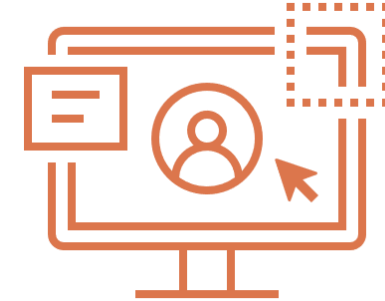
In depth

- Long term relationships
- Will consider short-term activities if it leads to long term support



Person Centred

- Tailored approach when referring support
- Trusted relationship with other providers
- Supporting progress



Personal Plans

- Understanding of people's individual needs and challenges
- Written or electronic records
- Noting progress against activities



Application process

If you're thinking of applying, we've tried to make the process easy for you.

1

Find out what to expect from this programme

2

Answer 15 short eligibility questions

3

Tell us about the work your charity does in the application form

4

We'll make a shortlist and, if successful, one of our Grant Officers will talk through your application

5

We'll consider your application and will let you know the outcome



Development support

When you get a grant from us you can also get additional non-financial support. We'll work together to identify areas you want to develop – things like governance, fundraising strategy, or a new database.

1

We'll meet to discuss your development needs.

2

Find out about the range of support on our [website](#) and discuss with your team.

3

Make a plan with your Regional Manager and track your progress.

4

Take up the planned support and commit your time – it will pay dividends.

5

We'll meet every six months –and we'll discuss the impact of the support in detail every 18 months.





The unrestricted funding we received from Lloyds Bank Foundation has enabled us to set up a group for ex-residents. And we've also been able to employ a full-time worker to support people in the communities after they leave.

We've also received non-financial support from the Foundation. One of the most useful pieces of work we've done was around benchmarking ourselves as a charity, around governance and marketing. That was really helpful and means we have strategic goals and can track our progress.

Sue Gwyn, CEO of Brynawel House



Sue Gwyn with Rachel Marshall,
Regional Manager for Wales
(right)



**LLOYDS BANK
FOUNDATION**
England & Wales



Find out more



Check which funding programmes are currently open here:

lloydsbankfoundation.org.uk/funding



Sign up to our monthly newsletter for news on the sector, funding programmes, plus access to free resources.

<http://eepurl.com/dsQbS5>



LLOYDS BANK
FOUNDATION
England & Wales



Thank you

enquiries@lloydsbankfoundation.org.uk

lloydsbankfoundation.org.uk



LLOYDS BANK
FOUNDATION
England & Wales



Funder 5: **Soverign Network Group (SNG)**

Darryl McAndrew

Community Investment and Partnerships Lead

Please note this funder was unable to attend due to illness, but has attached the following slides as a background to their funding and we will aim for them to attend on another occasion.

Summary of SNG Community Investment and Partnership Team

February 2023

Community Investment and Partnerships Team – Darryl MacAndrew
– darryl.macandrew@sng.org.uk

Our vision

To provide our current and future customers with more, better quality homes in thriving communities, to offer sector-leading services, and to use merger as a catalyst for improvement.

About SNG

- On Sunday 1 October 2023 Sovereign and Network Homes merged to form **Sovereign Network Group** (SNG)
- One of largest housing associations in the country with over **82,000 homes** serving over **210,000 residents** across London and the South of England.
- In the top six housing associations by size, and in the top three by development programme.
- Plans to invest around **£8.5 billion** in our existing and new homes over the next 10 years, with an annual development programme of up to **2,500 homes** a year alongside an ambitious retrofit strategy.
- Create a **community foundation**, investing £100m in the next 10 years to direct support our residents and communities.

Locality 9 – Bristol and Gloucester

- Amy Evens
- Kirsty Dykes
- Laura Barfoot
- Henry Palmer
- Charlotte Payn
- Deb Williams
- Daisy Mummery

Locality 10 – Swindon and Cotswolds

- Amy Evens
- Kirsty Dykes
- Laura Barfoot
- Vic McFarlane
- Charlotte Payn
- Deb Williams
- Daisy Mummery

Locality 1 – Ox and Home Counties

- Victoria McFarlane
- Anneka Bebb
- Laura Barfoot
- Lorna Collisson
- Deb Williams
- Daisy Mummery

Locality 2 – Newbury, Thatcham and Reading

- Jyoti Sabbarwal
- Anneka Bebb
- Laura Barfoot
- Darryl MacAndrew
- Lorna Collisson
- Deb Williams
- Daisy Mummery



Locality 3 – North Hampshire, Basingstoke and Surrey

- Hayley Burgon
- Anneka Bebb
- Rachel Quinsee
- Darryl MacAndrew
- Lorna Collison
- Deb Williams
- Anita Hansen

Locality 8 – Devon and South West

- Lyn Bedwell
- Kirsty Dykes
- Gemma Howison
- Henry Palmer
- Charlotte Payn
- Deb Williams
- Daisy Mummery

Locality 4 – South Hampshire and Sussex

- Hayley Burgon
- Anneka Bebb
- Rachel Quinsee
- Toby Eaglen
- James Taylor
- Deb Williams
- Anita Hansen

Locality 7 - Dorset

- Marc Salmon
- Kirsty Dykes
- Gemma Howison
- Diane Humphries
- James Taylor
- Deb Williams
- Anita Hansen

Locality 6 – BCP and New Forest

- Amy Evens
- Kirsty Dykes
- Gemma Howison
- Diane Humphries
- James Taylor
- Deb Williams
- Anita Hansen

Locality 5 – Isle of Wight

- Dawn Winfield-Jones
- Anneka Bebb
- Rachel Quinsee
- Toby Eaglen
- James Taylor
- Deb Williams
- Anita Hansen

Matthew Buckham
SNG Community Investment Director

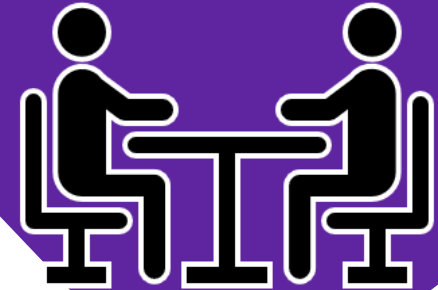
Employment and Skills



Communities and
Engagement



Partnerships and
Funding





Communities and Engagement

Building strength in our communities is fundamental to making our homes great places to live. We work with key partner organisations and customers to co-create programmes that create equality, improve quality of life and enhance wellbeing.

Our approach

- **Universal Offer** – Delivery of a wide-ranging programme of community investment interventions and initiatives across SNG geography.
- **Locality responses** – bespoke strategic projects, provision and collaborations that respond to locality needs and priorities.
- **Specialist provision** – enhanced and externally funded provision (SNG #will Fund, Move on and Thrive, Safer streets...)

Delivery Model

- Thematic CI provision focused on 6 core themes.
- Strategic partnerships & alliances for the long term
- Capacity building grass roots and key anchor organisations
- Providing community grants and commissioning services
- Focus on sustainability
- Customer voice.

Our work is centred around six core themes:



Customer Voice, Engagement and Action

Creating spaces where customer's voices can be heard and empower them to influence, take action and make a difference



Youth

To foster and develop meaningful play, learning and development opportunities for CYP by encouraging and them to steer initiatives, achieve their aspirations transition from where they are to where they want to



Ageing-Well

To invest in the development of more inclusive and age-friendly communities, tackling inequalities and responding to customer's individual needs with the aim to improve their quality of life as they age.



Environment Place

Strengthen capacity and work together to create lasting improvements in local communities for a greener and safer future



Health & Wellbeing

Helping to create communities where people can feel well and live well



Social

Promoting equal opportunities and enhancing participation of our customers by reducing isolation, supporting cohesive communities and developing a sense of belonging.

Partnerships and Funding

- **Fundraising and innovation**
 - Bringing external funding and resources into our localities to benefit customers
- **Social impact and social value**
 - Measuring the social impact of our Community Investment programme
 - Maximising the social value of our supply chain
- **Social enterprise**
 - Supporting new and existing social enterprises across our localities
- **Grants**
 - Coordinating grants to charities and community groups



Upcoming events, forums & training

[Safeguarding Children training, 4 June 2024, 10am – 1pm](#)

[Trustee Training, 13 June 2024, 10am – 1pm](#)

[Community Buildings Forum, 12 Sep, 10.30 – 12noon](#)

[Bitesize Volunteer Management – Keeping it Legal 24 Sep 2024, 10am – 11.30am](#)

[First Steps towards Safe and Sound](#) – introduction sessions:

- 20 Jun, 1 – 2pm (online)
- 28 July, 1 – 2pm (in person)

[More training opportunities here](#)

Speed Q&A and speed networking

11:35 – 12:00

Speed Q&A with funders/ speed networking with other charities

5 minutes then rotate

Listen for the bell



Slides to follow via email

Please complete feedback forms 😊

[Subscribe to RVA news](#)

